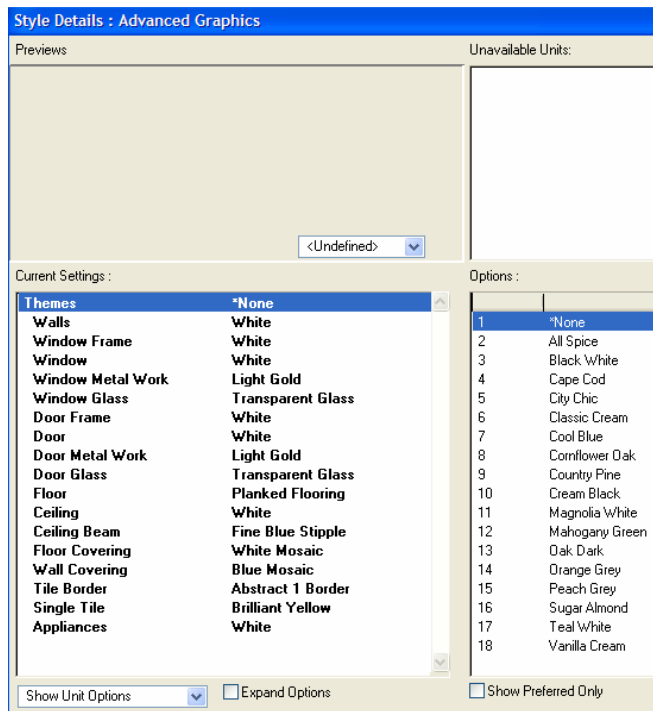


Contents

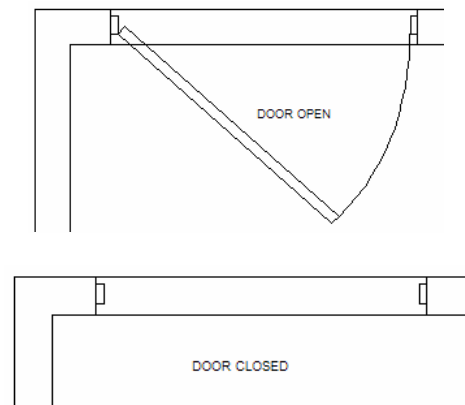
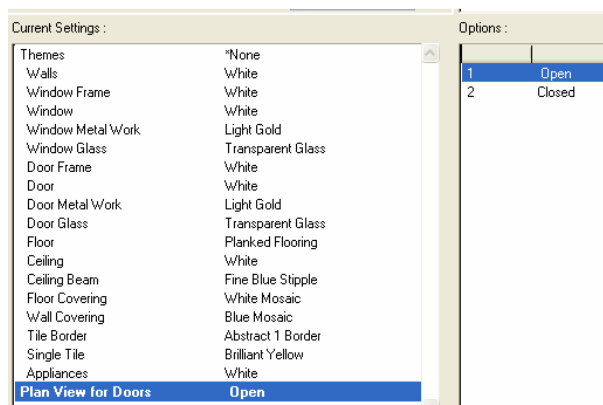
| | |
|----------------------------|----|
| STYLE DETAILS UPDATE..... | 3 |
| TOOL BAR ADDITIONS..... | 5 |
| CUSTOM BACKGROUNDS..... | 5 |
| PERSPECTIVE VIEW..... | 6 |
| DYNAMIC SCREEN RENDER..... | 6 |
| DUAL SCREEN OPTION..... | 6 |
| WALL TILING..... | 7 |
| FLOOR TILING..... | 9 |
| SURFACE COVERING..... | 11 |
| VELUX WINDOWS..... | 12 |
| COLOUR CHANGE..... | 13 |
| GOOGLE SKETCHUP..... | 13 |

Style Details Prompt

On drawing the initial wall layout, Style details screen of Advanced Graphics catalogue will be displayed to choose your colour scheme.



When you drag and drop a door you will get a prompted link by default. You can choose to display the doors OPEN or CLOSED in Plan view.



When the Style Details Prompt is displayed, you have a choice to display Room Options, or Catalogue Options from the style details Show Options drop down menu.

Style Details : Wellmann (UK) 2008

Previews

| Current Settings : | |
|--------------------|---------------|
| Range | w 3-394 |
| Front Colour 1 | 356 alder nat |
| Handle Type | 153 metal bo |

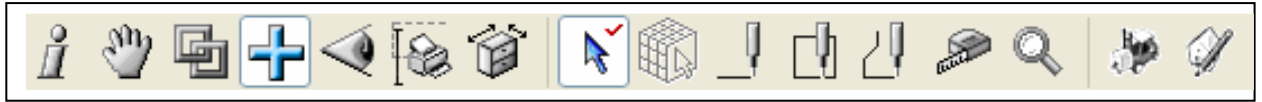
Show Room Options [v] Expand Opt

- Show Room Options
- Show Catalogue Options

Show catalogue options will display ALL catalogue DLT options as before.

Show room Options will only display price group and front colour.

Tool Bar Additions



Surface covering tool (NEW)



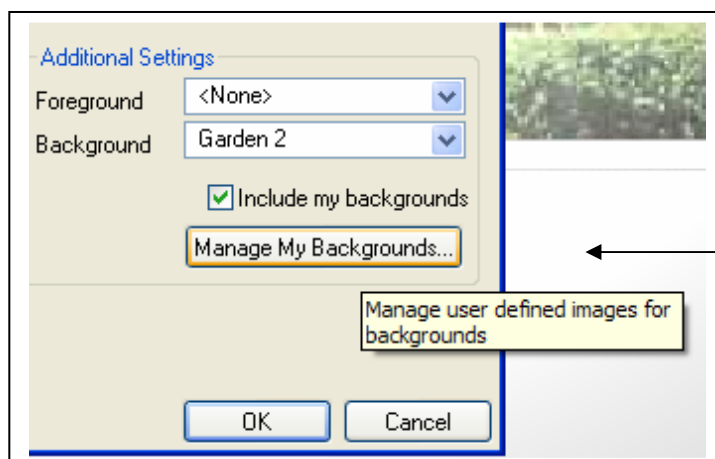
Google 3D Warehouse import (NEW)



Google Sketch up import (NEW)

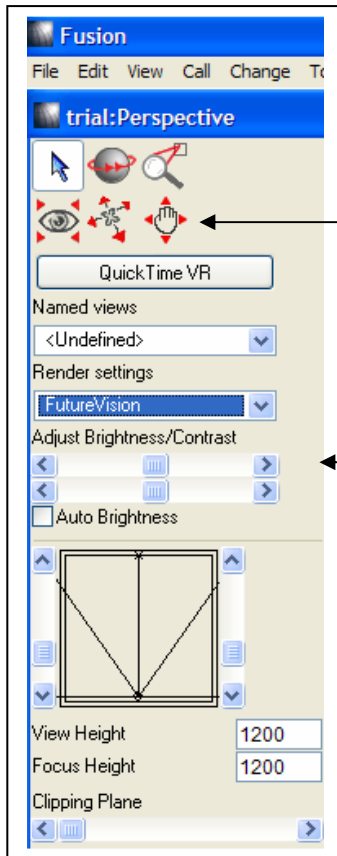
Custom Backgrounds

You can now import your own Background images in jpeg format.
Select 'Define' from the render settings button.



Your own images can be inserted using the 'Manage My Backgrounds' button

Perspective View



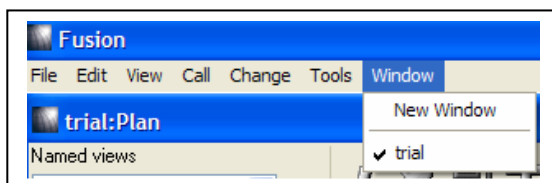
There are 5 navigation buttons. Orbit, Zoom, Look Around, Walk and Drag mode

Brightness / Contrast control bars for clearer perspective views. There is also a 'Auto Brightness' button.

Dynamic screen render

As the view is altered within the perspective, the screen will start to render instantly, any subsequent changes will be started instantly.

Dual Screen Option

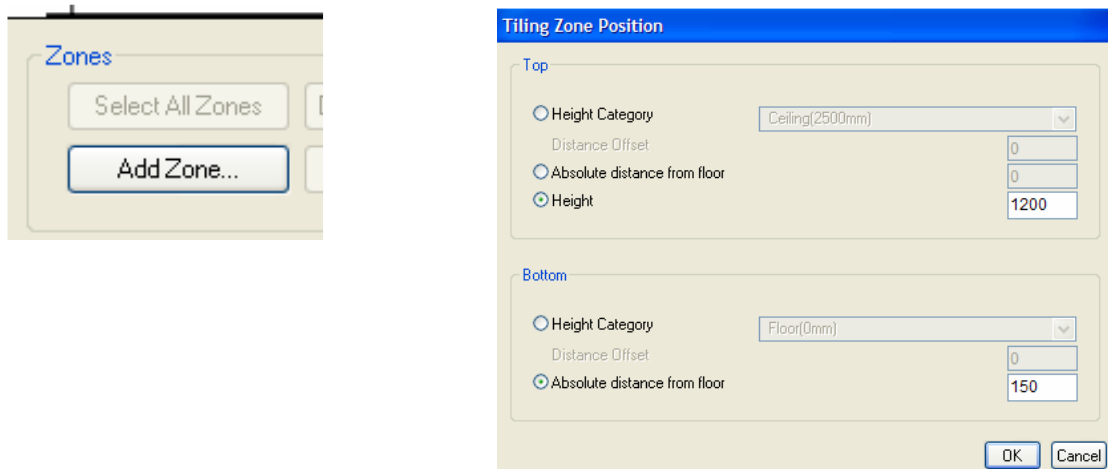


From the 'Window' option select New Window.

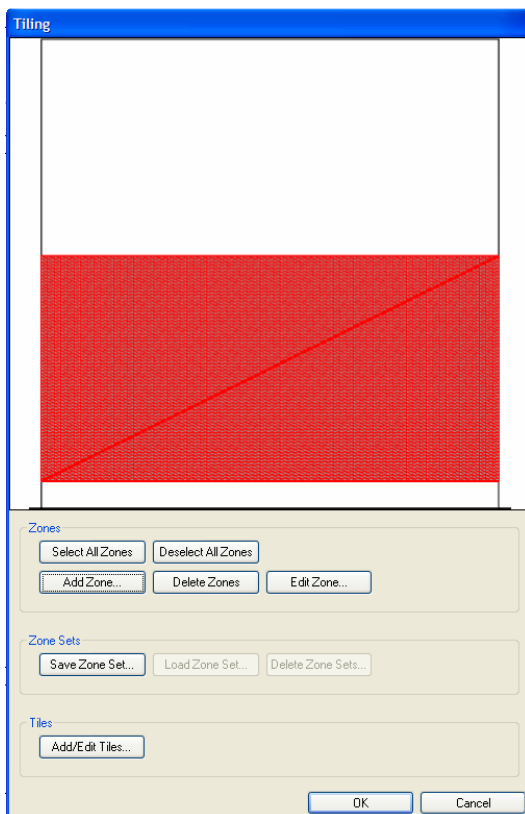
If you have a second screen connected, you can update your plan view and have the future vision perspective update at the same time by displaying the perspective on the 2nd screen.

Wall Tiling

First select the wall, now select 'Tiling' from the 'Call' menu. Select 'Add Zone..'



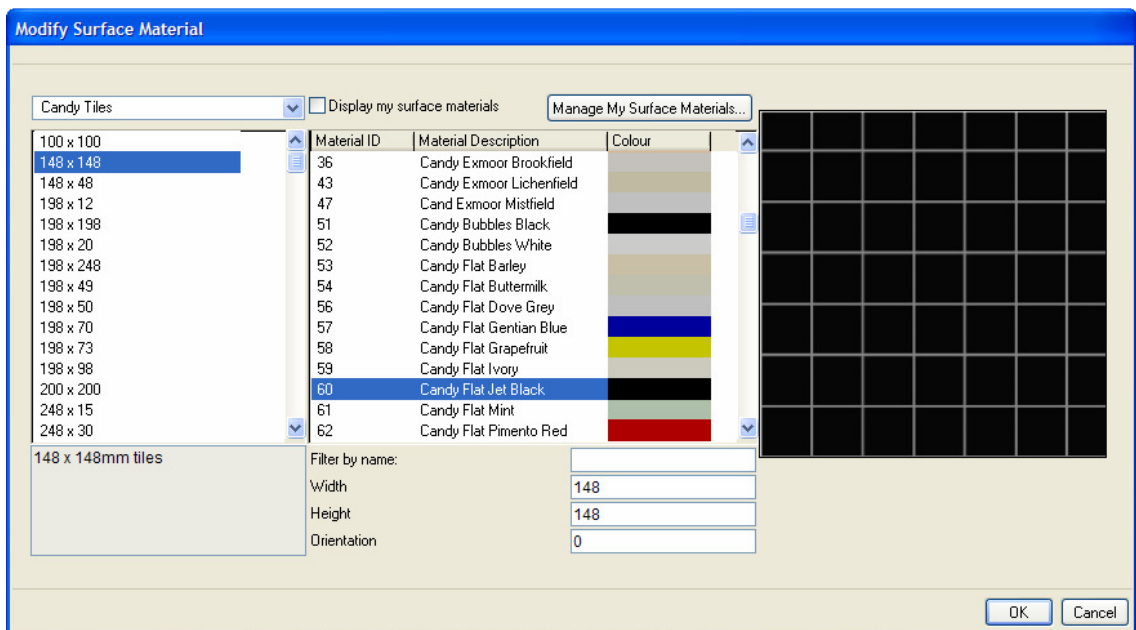
In the Tiling zone position window, enter the height and height off floor for your bank of tiles and click 'OK'. In the example above, a bank of tiles 1200mm high and 150mm off floor is chosen.



Now click the 'Add / Edit Tiles' button. This will allow you to pick your tile.

You can now enter the size and orientation of your tiles.

Now click the OK button..



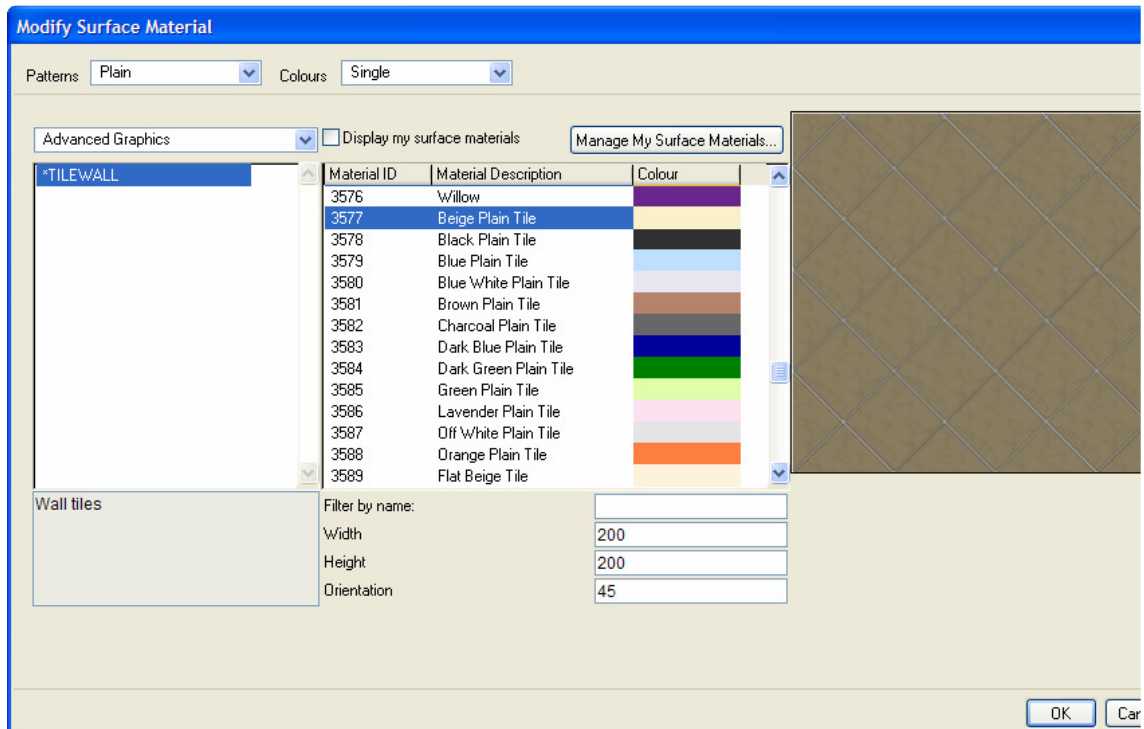
Make your choice as required and click the OK button. In the example above, 148 x 148mm Candy Flat Jet Black tile is chosen.



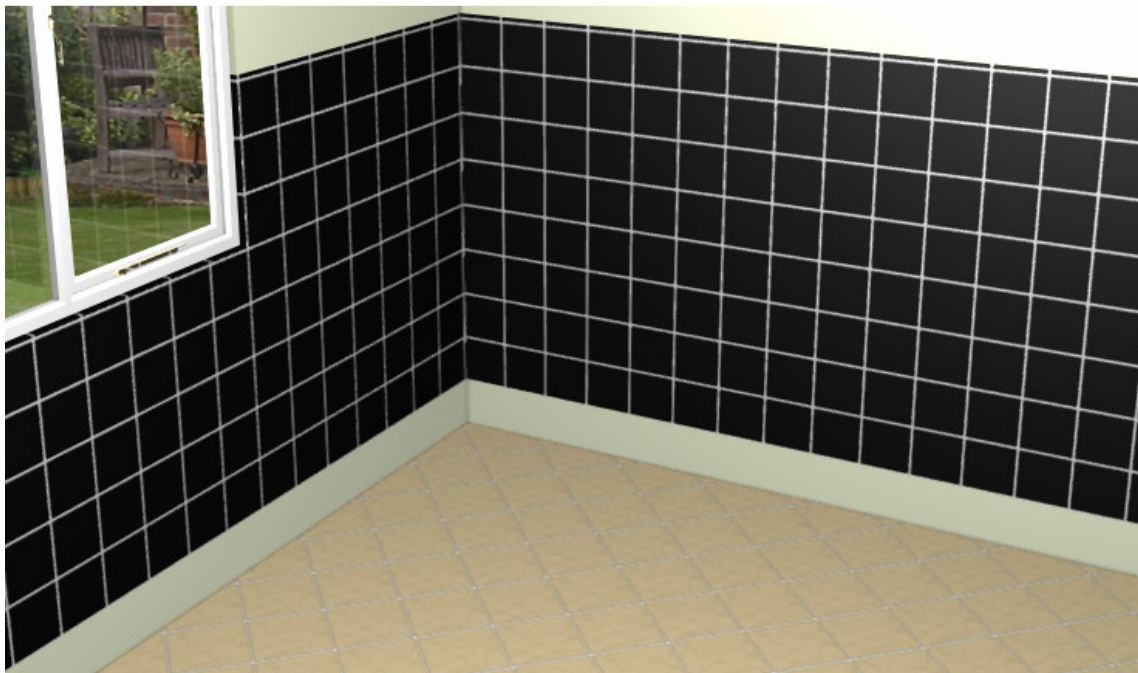
When zones are added to other walls, previously chosen tiles will be added by default. This could be changed if needed by selecting the Add / Edit zones button. The view above show tiles 1200mm high 150mm above floor.

Floor Tiling

Select perspective view. 'Wireframe' setting is preferable. Now select 'Apply Floor Covering' from the Call menu.

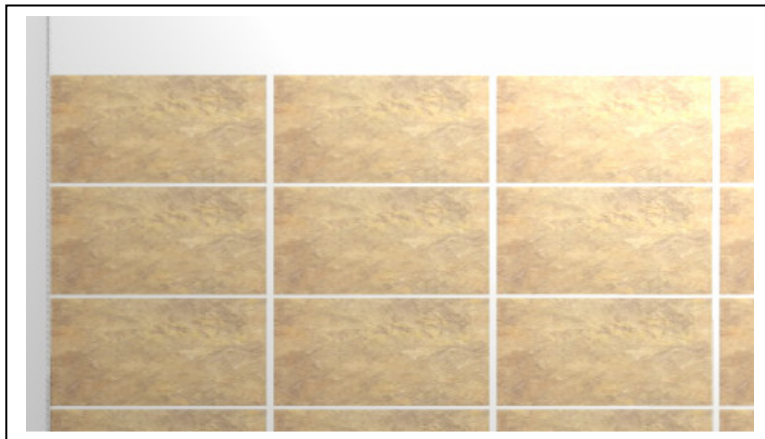


A 200 mm square Beige plain tile is chosen with a 45 degree orientation. Now click the OK button.

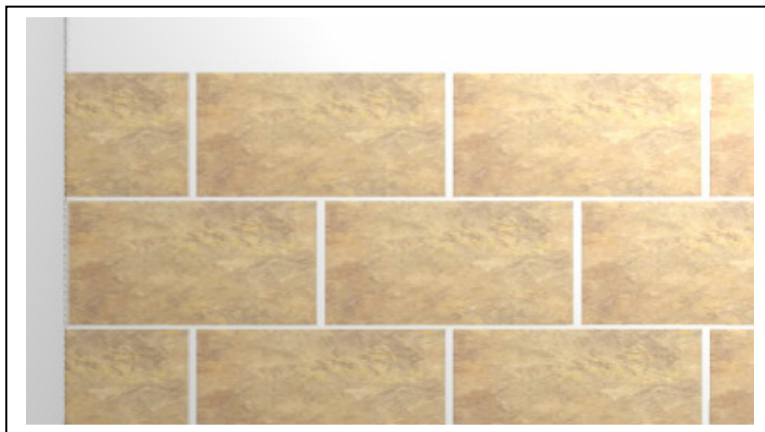


Wall Tiling Patterns

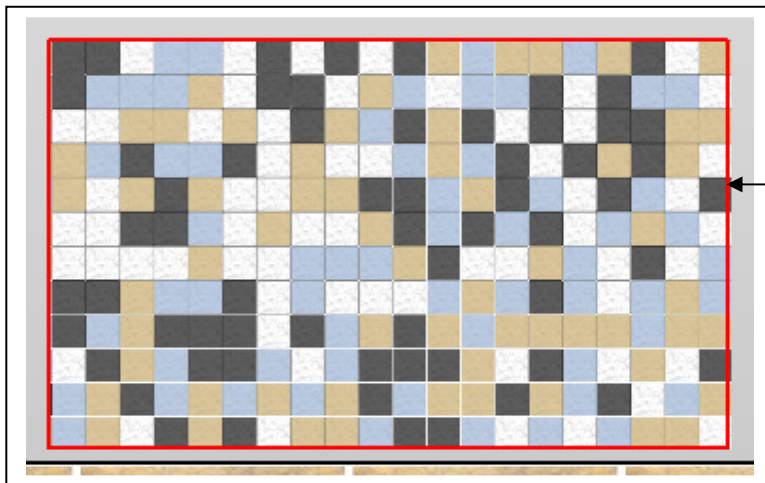
Using the Tiling window, Single tile, Brick pattern and Melange effect can be obtained.



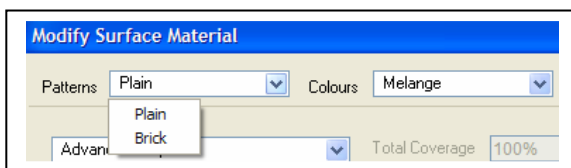
Plain Tile Pattern



Brick Pattern



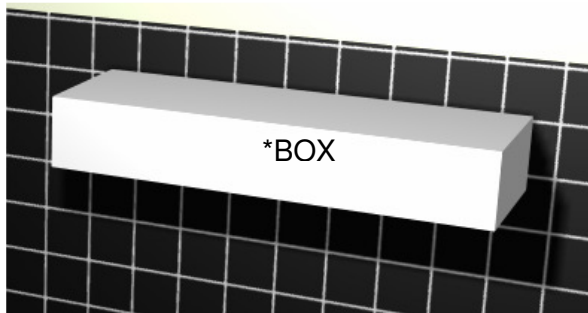
Melange pattern using 25% each of Blue, Black Green and white tiles 50 sq mm



Pattern can be selected in the 'Modify Surface Material' dialogue.

Surface Covering

Surface covering could be added to any surface eg. *BOX by choosing 'Apply surface covering' from the Call menu.

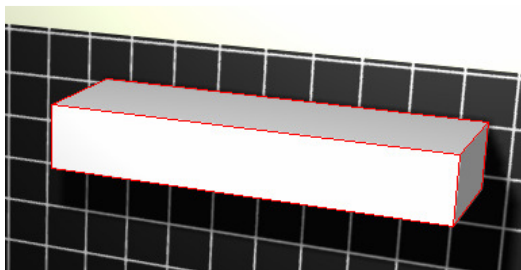


Surface covering can only be done in perspective view. The *BOX is used as an example.

View perspective and select the

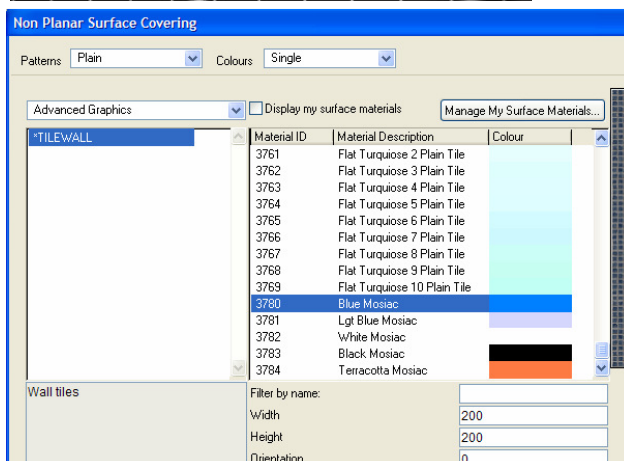


from the tool bar

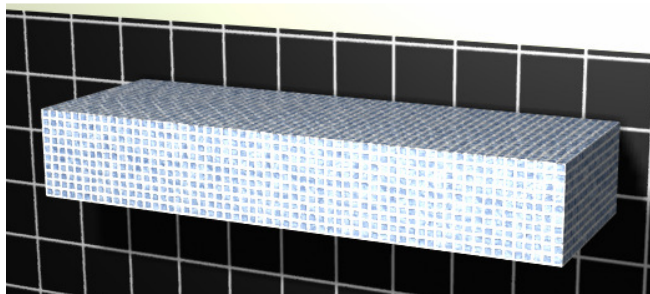


The top, front and the side of the *BOX is chosen. You can multi-select by holding down the 'shift' key.

Select apply surface covering from



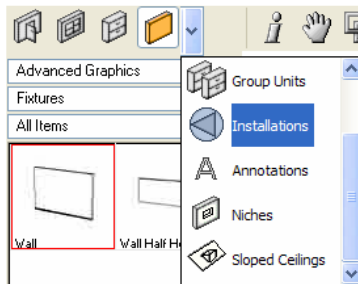
Make your colour choice and click OK.



*BOX with a surface covering in 'Blue Mosaic'

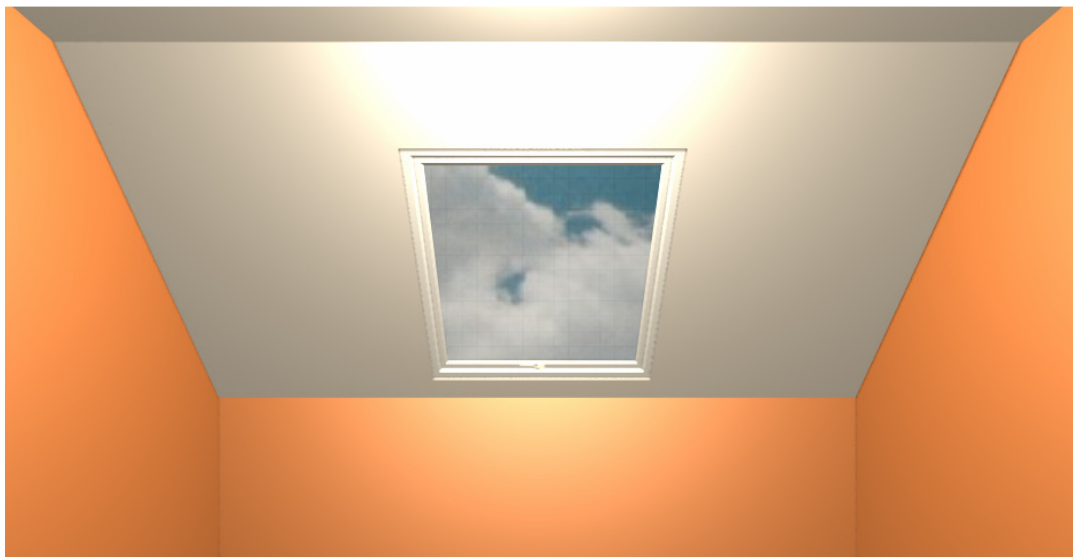
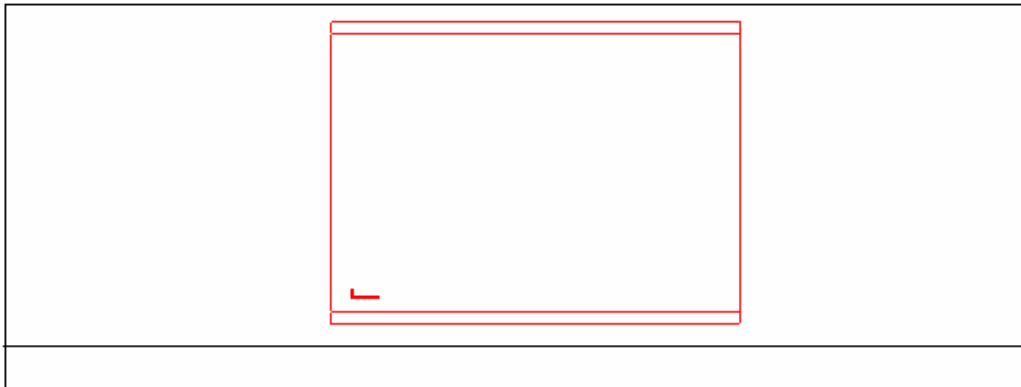
Velux Windows

In Plan view, select 'Sloped Ceilings' from the add palette drop down sub menu.

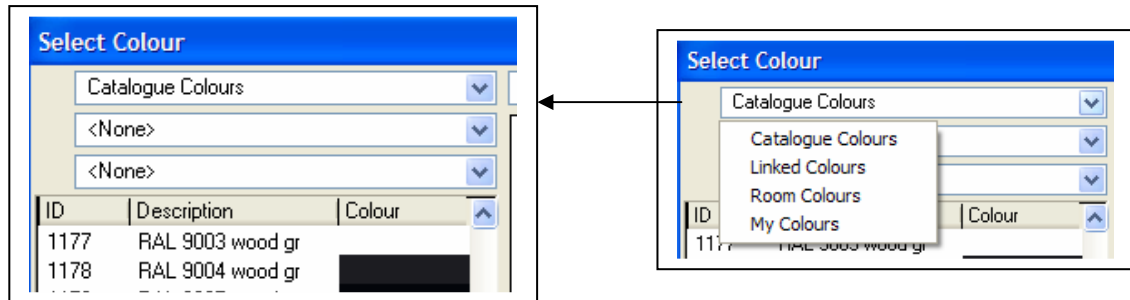


Select the Polyadd tool and click to start in the internal corner where the slope is needed. Move clockwise and double click to finish. This will draw a slope along that wall. The height can

View the Elevation in wireframe. Click in Window symbol in the add palette and select the 'Velux' window. Now select the elevation by clicking the 'Select Walls' button or click the elevation wall in the 'mini' plan in the view palette on left. This will make the wall active. Now 'Drag' the velux window into the sloped ceiling so that the window is positioned between the top and bottom line of the slope. You can move the window up by holding down the 'CTRL' key.



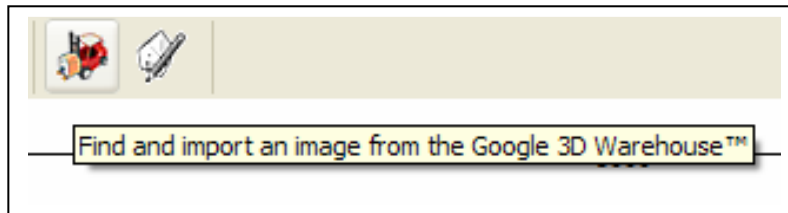
Select Colour Dialogue



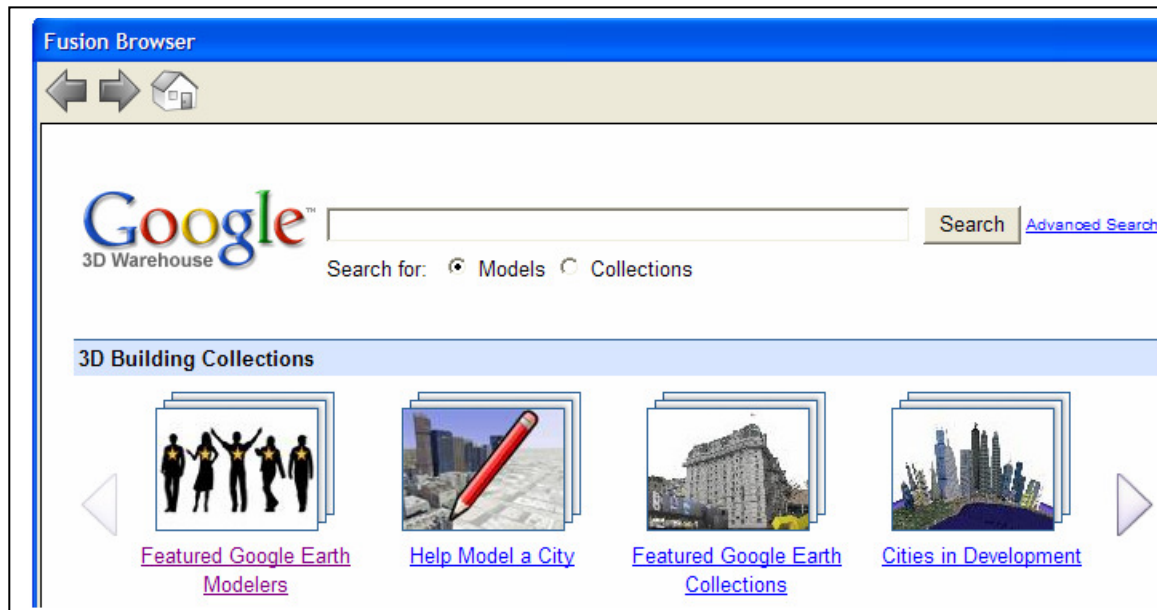
Various colour change options are available from the 'Catalogue Colours' drop down menu. The available options are: Catalogue colours, Linked colours, Room colours and My colours.

Google Sketch up Model (Optional Module)

You can import an image using this option. Click the google sketch up icon from the tool bar.



A browser window for the 3D Google Warehouse will be displayed. You can select your own 3d model or use the Search window.



On requesting a download, you can input your own Order Code, Description and Price and Click the OK button.

| General Settings | |
|--------------------------|----------------------------------------------------------------------------------------------|
| Catalogue | PRICED Universal Kitchens NDS |
| Template | No Template |
| Type | Standard Unit |
| Layer | Walls |
| Report Category | Kitchen Unit |
| Unit Name | Unit Name |
| Order Code | ELICA |
| Description | ELICA Om Cooker Hood |
| Height Off Floor | 0 |
| Handing | <input checked="" type="radio"/> None <input type="radio"/> Left <input type="radio"/> Right |
| Snap to Wall Orientation | <input type="checkbox"/> |

| Dimension Settings | |
|--------------------|-------------------------------------|
| Length | 800 |
| Depth | 362.18 |
| Height | 862 |
| Lock Proportions | <input checked="" type="checkbox"/> |

| Price Settings | |
|---------------------|------|
| Purchase Price | 0.00 |
| Retail Price | 0.00 |
| Price Including VAT | 0.00 |
| VAT Category | 1 |

You can now move the downloaded object into position.

